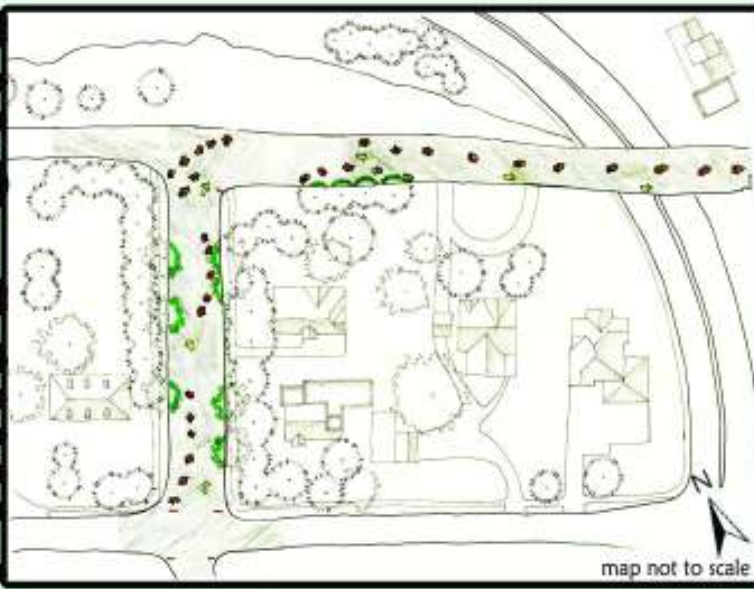
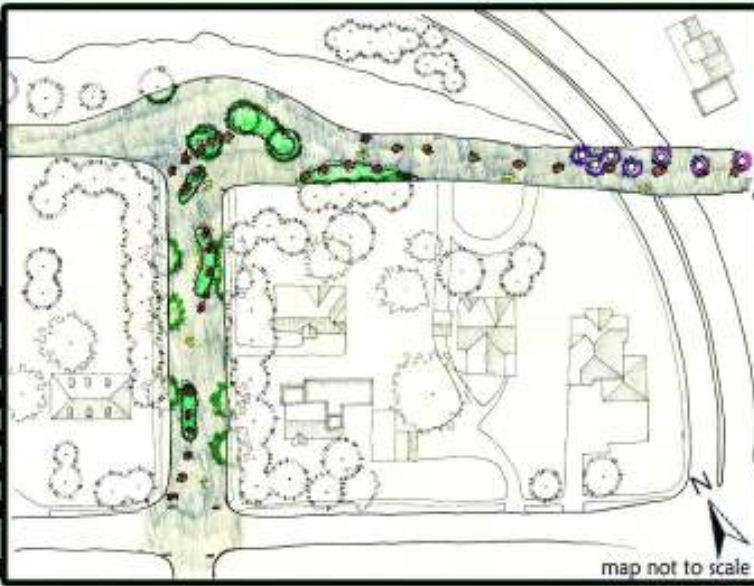


PHASE ONE



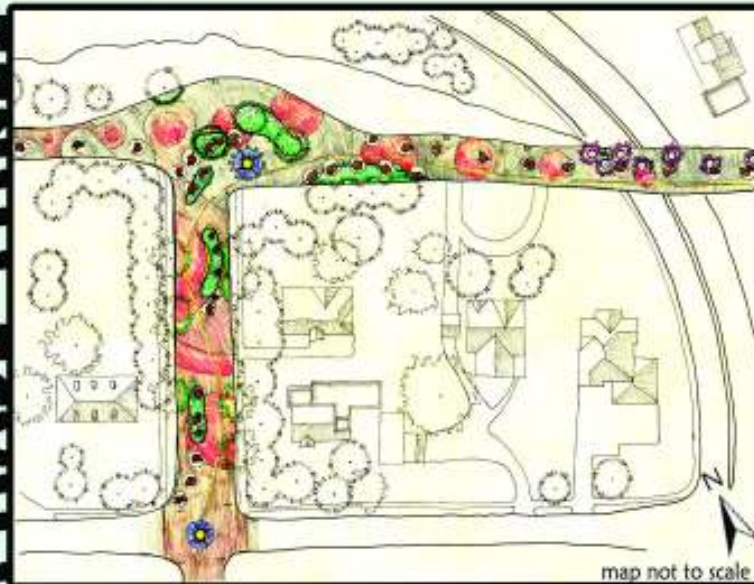
The first construction phase of the woonerf system will be completed at the least cost possible. Using the basic principles of typical woonerf street, boulders will be placed in positions that will force vehicles to weave from side to side and also be more aware of their surroundings. In doing this, the driver will proceed through the system slower and more responsive to pedestrians. The street will be made one way until the end of the cliff bridge to allow for safe vehicle passage. The bridge has been split 50/50 for pedestrians and vehicles. To direct vehicles, yellow arrows will be painted on the asphalt and cautionary signs will be placed in the appropriate places to notify drivers of the woonerf and for yielding to alternative transportation. The rocks will also block off a portion of cliff drive to purely pedestrian use.

PHASE TWO



The second construction phase of the system will consist of breaking through asphalt to place plant material in coordination with the boulders to continue to break the street into smaller, more visually manageable spaces for vehicles. The plants will also act as a visual buffer, which will slow down vehicles. Seats have been placed in strategic positions for sun/shade differences, views, and to make drivers more aware of pedestrians. The street has been extended at the intersection to cover the unsightly gravel, which is washing out, to stop erosion and also create a bypass of the intersection. Along the pedestrian path interpretive signs describing the social, environmental, and geological history of the greater Spokane area will be placed at regular intervals.

PHASE THREE



The final phase of the woonerf construction will focus on paving. Brick, concrete cobbles, and concrete will all substitute portions of the asphalt, but large portions of the asphalt will be kept in tact. Mosaic circles in the intersections featuring the Spokane Sun and a compass rose will help create a greater sense of place and signify the entrance into the woonerf system from any crossing. The pavers will also raise the height of the street to force cars to realize they are entering a foreign place, much like sidewalk curbs do for pedestrians. The boulders will be set into circles of concrete, giving them a sense of permanence. Weaving through the street will be a ribbon of bright yellow bricks which will take the place of the yellow arrows for the vehicles to follow.